

FORUS SE 250



Two-Shaft-Pre-Shredder



FORUS Pre-Shredders are specialists for all types of wood and waste – effortlessly shredding domestic waste, commercial and industrial waste, C&D waste, waste wood, green waste and rootstocks. The slow-running two-shaft-shredder also processes plastic films, paper, cardboard and electronic scrap just as efficiently. Depending on the shredding unit different rotor drives are used, from 2 x (multifunctional type, not synchronized) to 1 x (triangular knives, synchronized). The output sizes range from 150 to 500 mm depending on the type of the after breaker bar. The Special Edition 250 is a superb all-rounder that is reliably adapted to your requirements.

SE 250

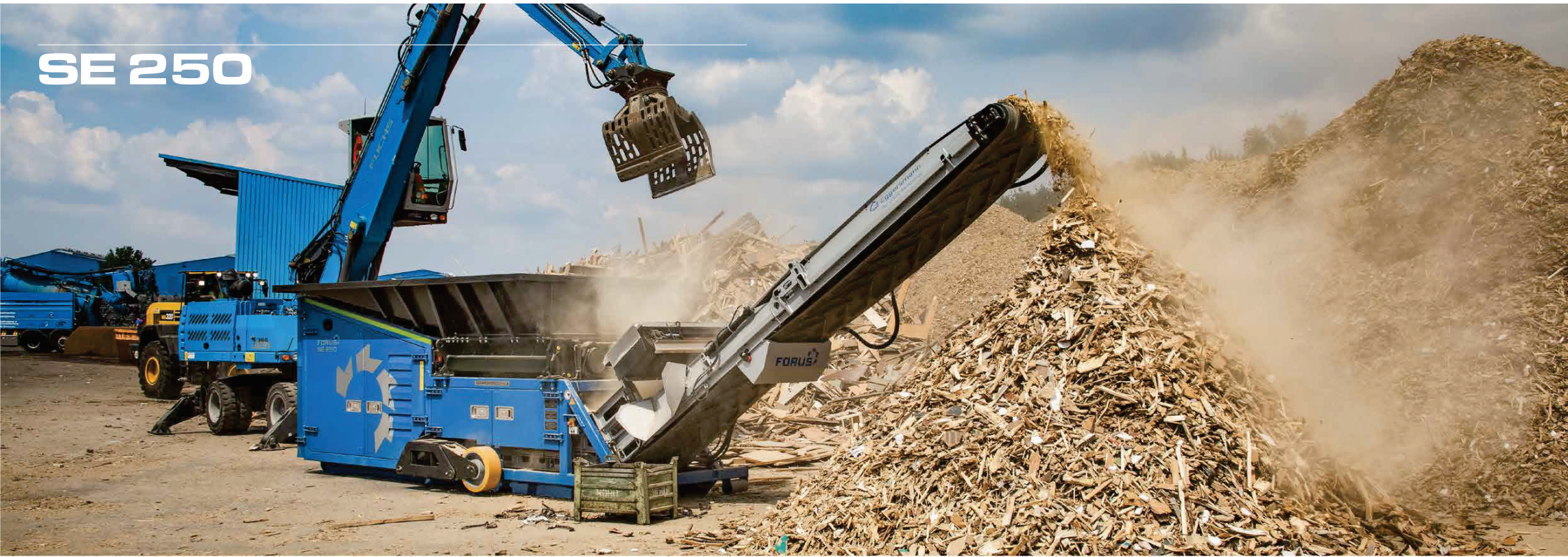
Included special equipment:

- > Hydraulic liftable and lowerable overbelt magnet
- > Breaker bar, type A1 - A4, optional
- > Hydraulic liftable and lowerable after breaker bar
- > Radio remote control
- > Lifting hopper
- > Lifting axle
- > Caterpillar undercarriage

Driving power	Diesel engine VOLVO TAD 8, Tier 4 final, EU-Stage 4, 185 kW - 251 HP
	Electric motor 132 kW
Possible throughputs*	Waste wood up to 25 tph
	Household waste up to 25 tph
	Commercial waste up to 20 tph
	Green waste up to 20 tph
	Biomass up to 50 tph
length	8,250 mm
width	2,350 mm
height	2,521 mm
Machine weight	approx. 15 t

* Approximate rates – throughput may vary based upon input material

SE 250





SE 250

- › The durable two-shaft pre-shredder is equipped with two cutting rotors and a crushing beam which is mounted centrally underneath the rotors
- › The geometry of the tools allows for universal application
- › 4 freely selectable shredding programs and a customized program especially for the client's material guarantee a high flexibility in shredding the most different types of material
- › The final particle size varies from 150 to 550 mm depending on the input material
- › Continuously adjustable rotor speed (forwards and backwards) from 28 to 5 rpm
- › Dimensions of the opening above the rotors 1,350 x 1,550 mm
- › Tilttable chute with 4 m³ volume and an efficient material infeed
- › hydraulically adjustable magnet height for flexible use according to the material volume
- › the through discharge system guarantees optimal material guiding
- › the discharge height of 3,662 mm allows for direct container loading
- › Full electric control and monitoring of relevant machine components by sensors for a longer machine lifetime
- › comfortable and maintenance-friendly hydraulically lift- and lowerable crushing beam
- › variable final particle size through exchange of the crushing beam types A1 to A5
- › large doors allow for comfortable access to the shredding unit
- › different options can be combined: Damping System, lifting axle, chute extension

SE 250

