



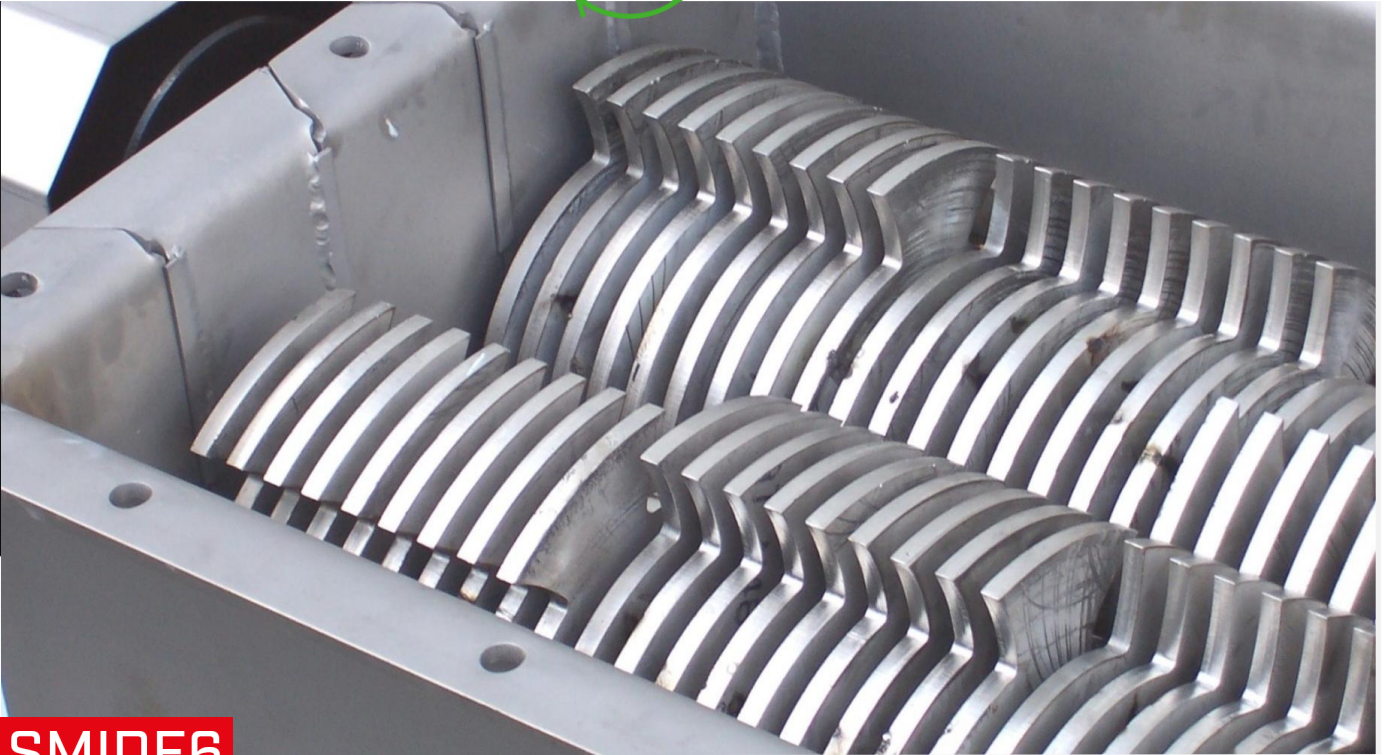
# smicon

improve the process

improve the future

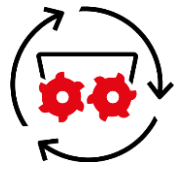


## SHREDDING



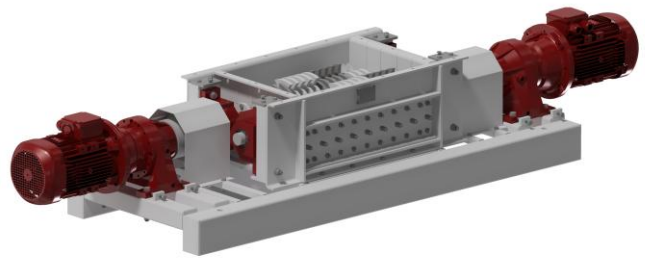
### SMIDE6

SMIDE shredders or coarse cutters cut potatoes, fruit, vegetables, foodstuffs and residual products into smaller parts, for example reducing particles size diameter to < 10 mm. As a result, organic products are easier to pump and process. The SMIDE8 shredders are double shaft machines. The machine is of modular design, so that the product size can be controlled by adjusting the set of blades. Since the early nineties the SMIDE5 shredders have frequently been used in the animal feed and recycling industries. Furthermore, the SMIDE8 shredder is used to prepare flows of organic matter, making them suitable for processing in fermenting, digesting and composting as well as the food industry.



- ▶ Available with multiple blade types
- ▶ Blades can rotate both ways
- ▶ The product size can be controlled by adjusting the set of blades

**INPUT**  
FRESH PRODUCE,  
(UN)PACKAGED  
AND SWILL


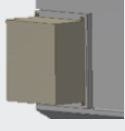
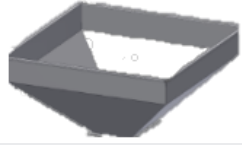


**OUTPUT**  
PACKAGING  
AND ORGANIC  
FLOW

# SMIDE6 TEST UNIT

## TECHNICAL DATA

Dimensions	
Test unit total	2196x780x550 mm (without drive) (LxWxH)
Infeed	676x460 mm (LxW)
Outfeed	676x460 mm (LxW)
Transport dimensions	3545x780x700 mm (LxWxH)
Transport volume	1,52 m <sup>3</sup>
Clearance area	5145x2380 mm (LxWxH)
Blade width	8 / 15 / 30 mm
Weight	
Weight	1125 kg
Floor load per feet	11250 N total static
Transport weight	1125 kg
Drive	
Power	4 / 5,5 / 7,5 kW
RPM shaft	56 to 74
IP Rating	IP56
Product information	
Capacity	15-25 tons / hour
Product temperature	1-70 °C
Other specifications	
A-weighted sound pressure level	<74 dB
C-weighted instantaneous sound pressure	<130 dB
Technical data is specified according to the machine without accessories	

Accessories	
<b>Frame</b> 	<b>Control unit</b> 
<b>Infeed funnel</b> 	
Clearance area and illustrations	

